

227

C.G.

26

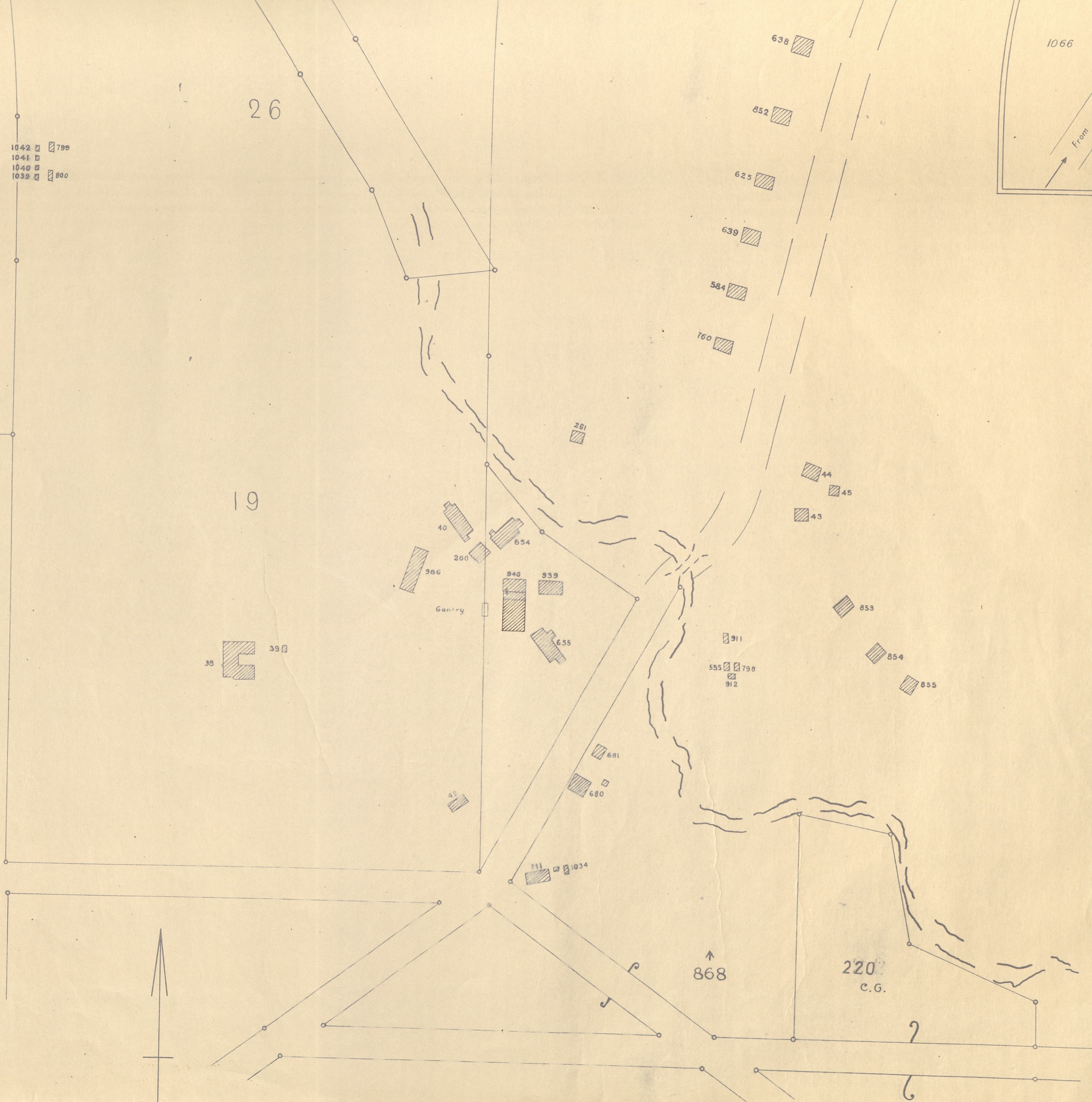
1042 799  
1041 799  
1040 800  
1039 800

1066

From Head

SCHEDULE

- N<sup>o</sup> 38 School (Jarrah) 8rms., kitchen, pantry & bathroom
- " 39 Toolshed
- " 40 Stables etc. 4 stalls, 2 chaff rooms, tools, garage, vehicles & harness room.
- " 41 Hut. lrm. [Pine]
- " 42 Office & Living Room
- " 43 House 3 rooms, kitchen, verandahs
- " 44 d<sup>o</sup> d<sup>o</sup> d<sup>o</sup>
- " 45 Tool & chaff house - 2 rooms
- " 260 Tool, implement & charcoal shed - 3rms.
- " 584 House (Type 8<sup>o</sup>) 3 rooms, kitchen bathroom & verandahs
- " 624 d<sup>o</sup> d<sup>o</sup> d<sup>o</sup>
- " 625 d<sup>o</sup> d<sup>o</sup> d<sup>o</sup>
- " 654 Workshop - Garage (30' x 30')
- " 655 Mill shed (100' x 30')
- " 680 House 4 rooms & verandah
- " 681 Schoolroom & verandah
- " 638 House (Type 8<sup>o</sup>) 3 rooms, kitchen, bath-room & detached wash-house
- " 711 House 4 rooms, kitchen, bathroom, verandahs & detached wash-house (Type 6<sup>o</sup>)
- " 555 Portable Hut (17' x 12')
- " 911 d<sup>o</sup> d<sup>o</sup> d<sup>o</sup>
- " 912 d<sup>o</sup> d<sup>o</sup> (kitchen)
- " 639 House (Type 8<sup>o</sup>) 3rms., kitchen, bathroom & detached wash-house
- " 261 Hut (3 rooms)
- " 939 Mill Planing Shed [25' x 50']
- " 940 Timber Storage Shed [25' x 50'] Extension 50' x 64'
- " 986 Storeroom & shed [30' x 15']
- " 852 House 3 rms., kitchen, bathroom, verandahs & detached wash-house [Type 8<sup>o</sup>]
- " 760 House d<sup>o</sup> d<sup>o</sup> d<sup>o</sup>
- " 797 Portable Hut [23' x 12']
- " 798 d<sup>o</sup>
- " 799 d<sup>o</sup>
- " 800 d<sup>o</sup>
- " 1034 Garage [20' x 10']
- " 853 House [Type 8<sup>o</sup>] 3 rms., kitchen, bathroom & detached wash-house
- " 854 d<sup>o</sup> d<sup>o</sup> d<sup>o</sup>
- " 1039 Hut [10' x 12']
- " 1040 Hut d<sup>o</sup>
- " 1041 d<sup>o</sup>
- " 1042 d<sup>o</sup>
- " 855 House 3 rms., kitchen, bathroom, verandahs & detached wash-house. [Type 8<sup>o</sup>]



Scale :- 2 chain to an inch.  
On plan 413 B/40.

FOR...